

# 一帶一路 METRANS

INTERMODAL  
OPERATOR  
WITH THE LARGEST  
RAIL & TERMINAL  
NETWORK IN  
EUROPE



# METRANS

2020 figures

## General information:

founded 1991, 100% HHLA

## Revenue:

nearly 450 000 000 EUR

## Intermodal:

over 1 200 000 TEU

## Depots:

over 1 200 000 TEU

## Employees:

2 216 (December 2020)



# Profile of the METRANS Group

Terminals, Locomotives, Wagons and Repair Shops

## 5 HUB terminals & depots

Czech Republic, Slovakia, Poland & Hungary

## 12 inland terminals & depots

Czech Republic, Slovakia, Poland, Austria & Germany

## NEW HUB TERMINAL 2023 # 18 ZALAEGERSZEG

to come...

## Over 2 million sqm on Depot & Terminal capacities

## Almost 80 locomotives

## Almost 3 000 wagons

## 2 repair shops for locomotives & wagons

Kolin & Dunajska Streda

## Offices in the ports

of Hamburg, Bremerhaven & Koper

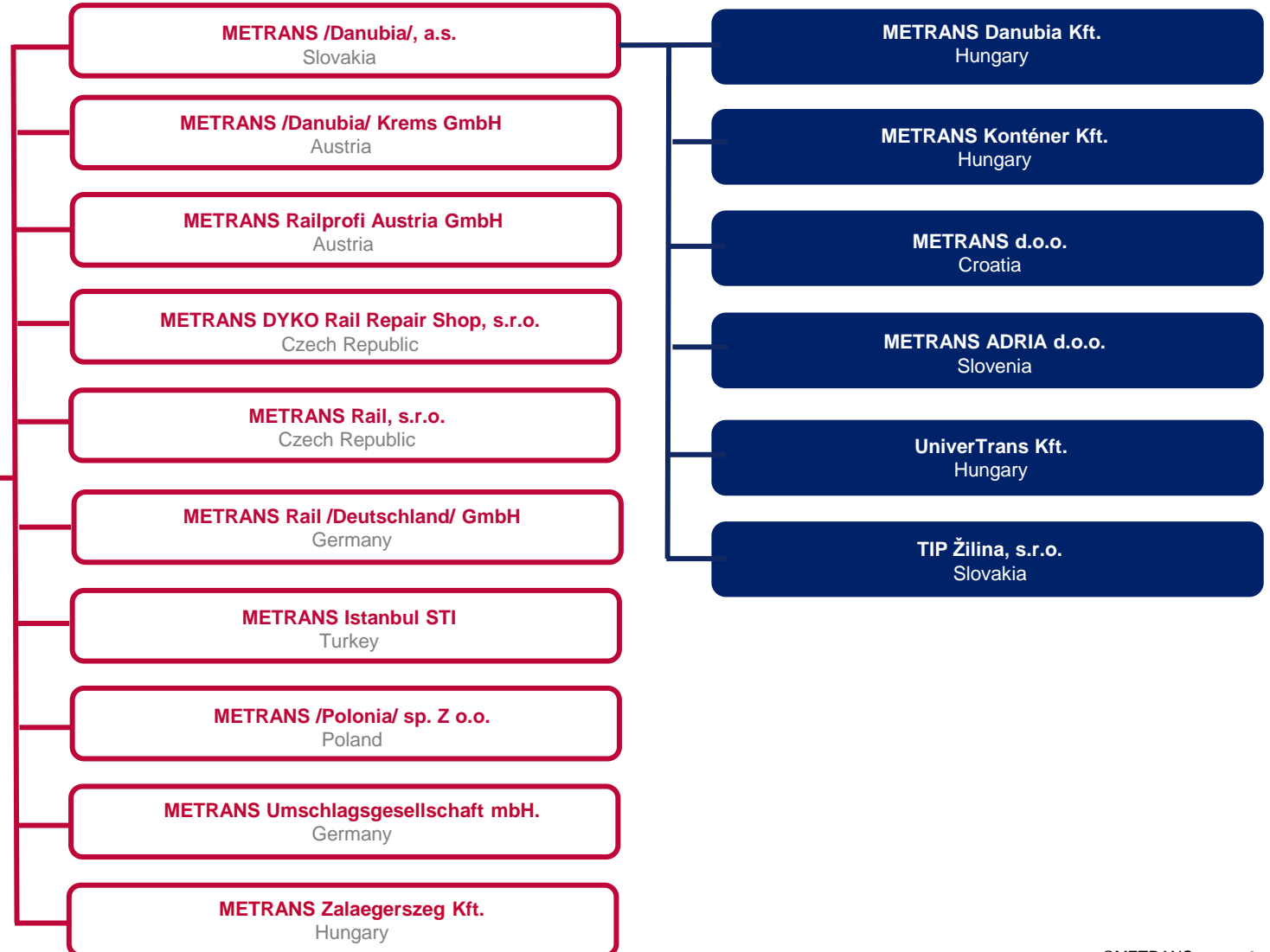


# METRANS Group

Established in 1991, sites in 9 countries, more than 2000 employees



**METRANS, a.s.**  
Prague, Czech Republic



# The largest European network

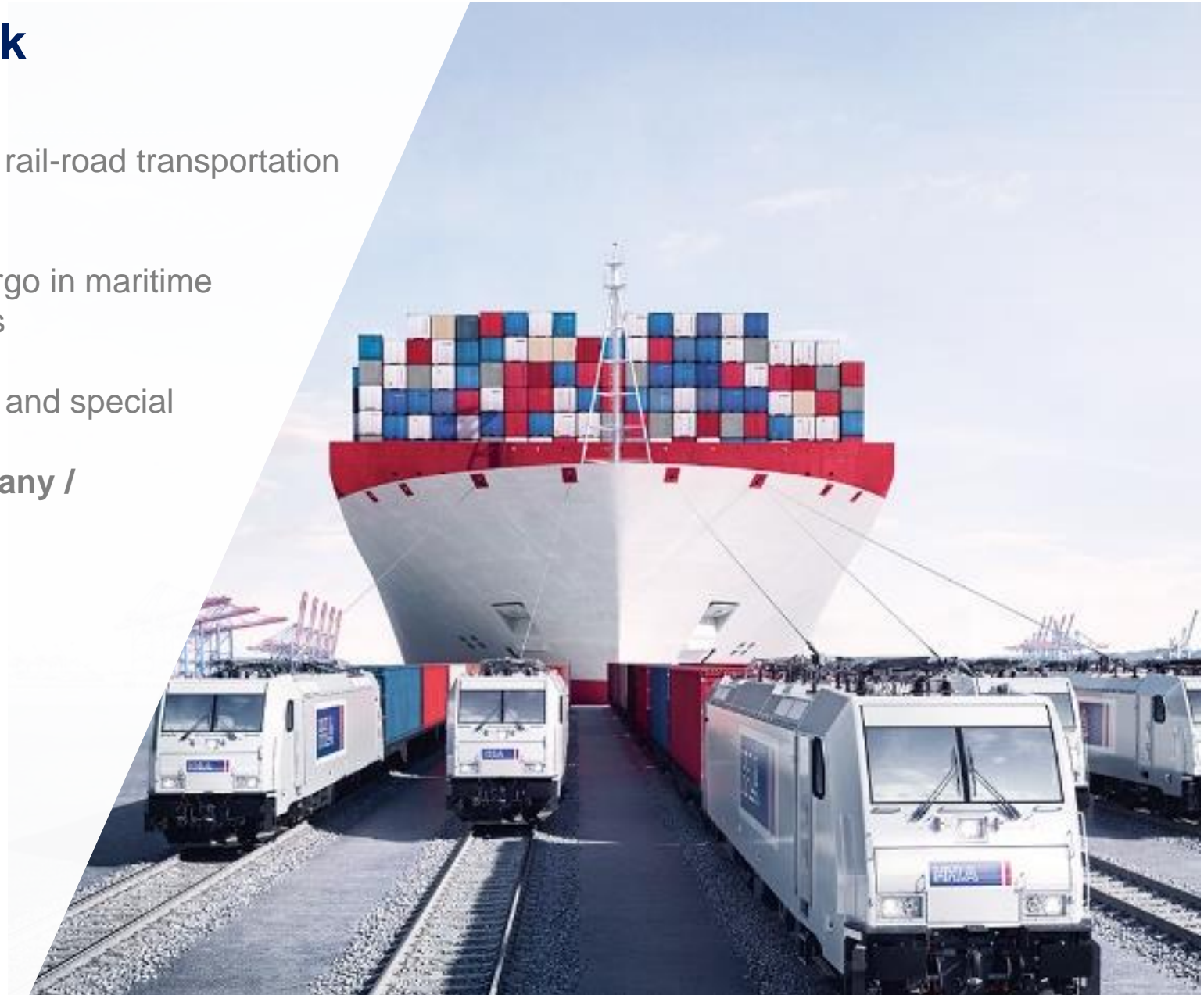
We provide all-inclusive just-in-time intermodal rail-road transportation service

METRANS operates own shuttle trains with cargo in maritime deep sea and short sea and for long haul trains

Transport of standard equipment, reefers, tank and special containers to / from the  
**Czech Republic / Slovakia / Hungary / Germany / Austria / The Netherlands / Belgium / Slovenia / Poland / Italy**

We connect these countries by rail with major European ports  
**Hamburg / Bremerhaven / Rotterdam / Duisburg**

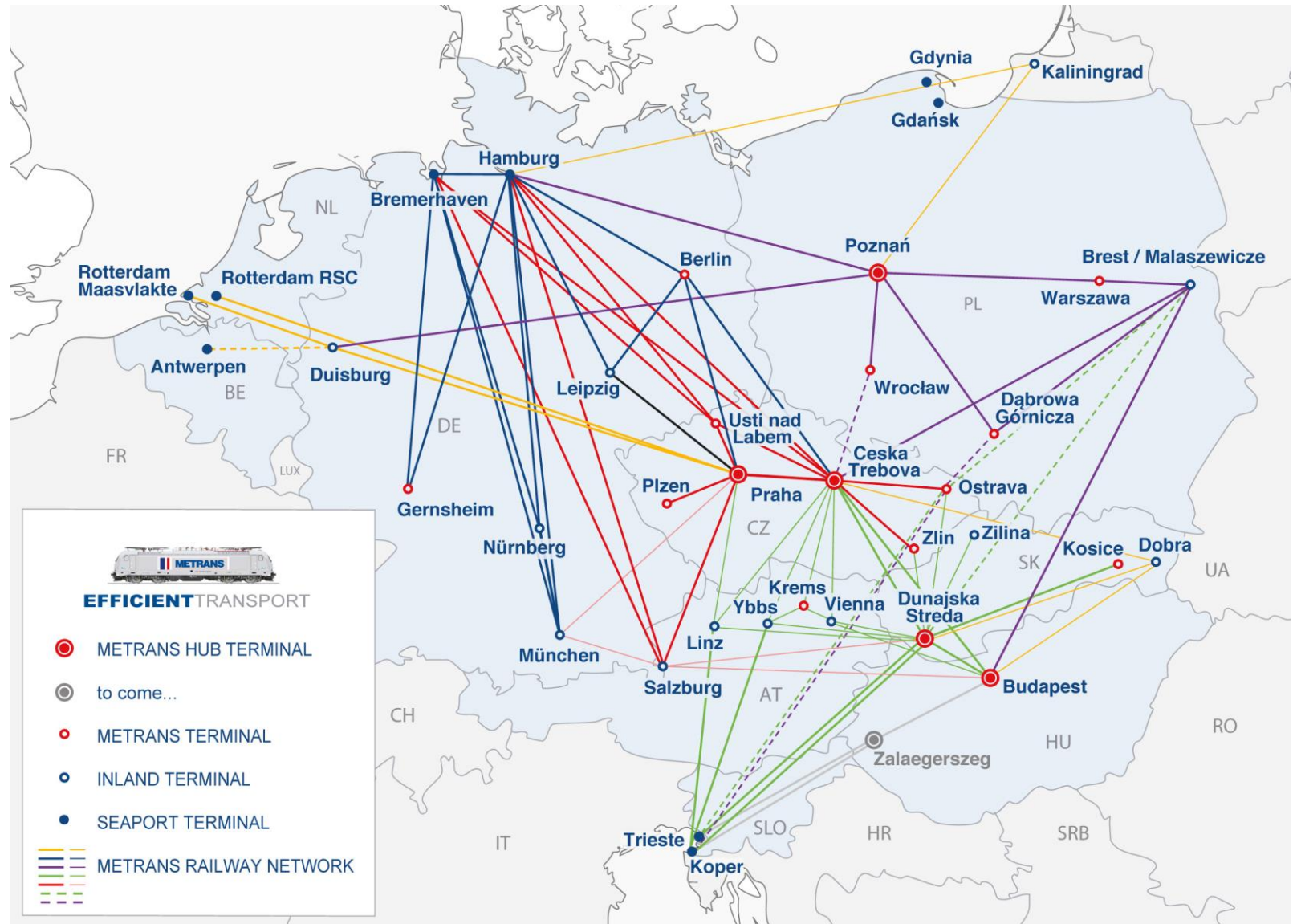
or southbound rail connection to  
**Koper / Trieste / Rijeka**



# METRANS

Over 550 regular train connections per week

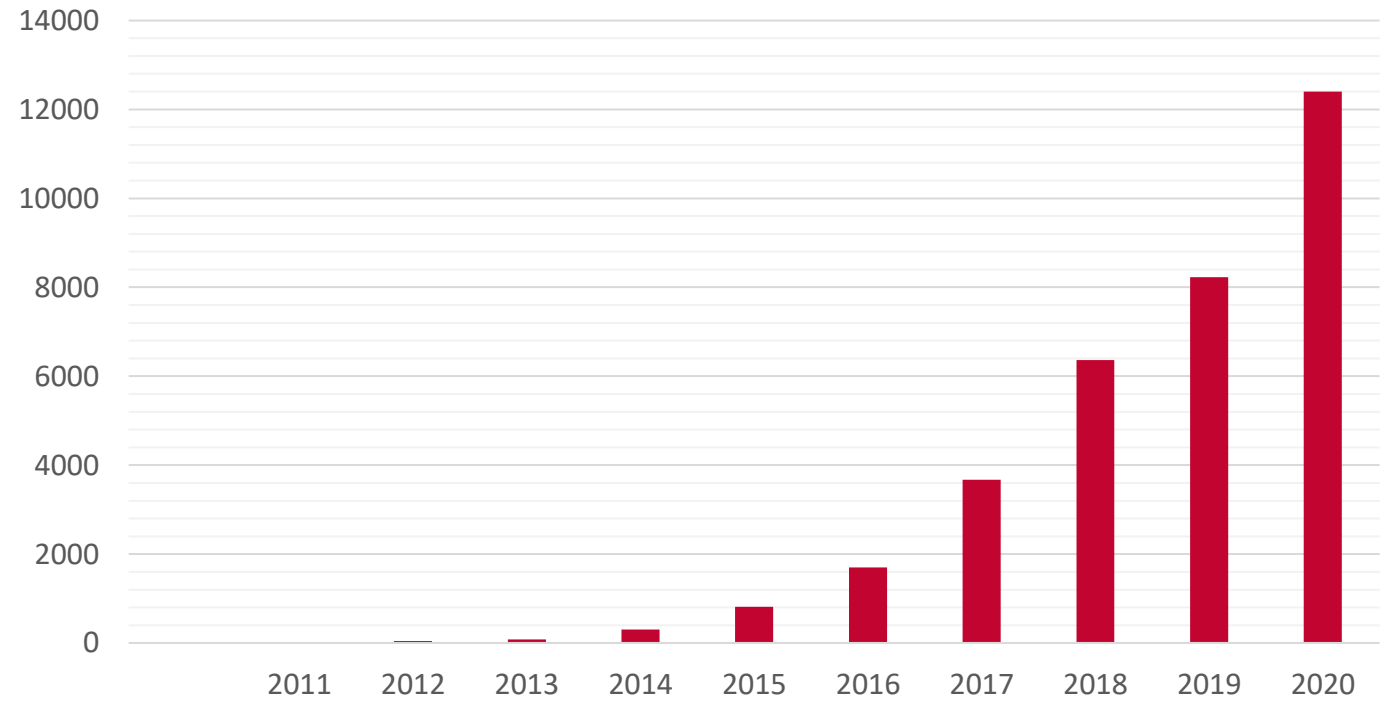
From/To			Trains per Week
Hamburg	↔	Praha	54
Hamburg	↔	Ceska Trebova	32
Hamburg	↔	Dunajska Streda	14
Bremerhaven	↔	Praha	13
Bremerhaven	↔	Ceska Trebova	12
Bremerhaven	↔	Dunajska Streda	6
Rotterdam	↔	Praha	10
Duisburg	↔	Praha	6
Koper	↔	Dunajska Streda	35
Koper	↔	Budapest	28
Praha	↔	Ceska Trebova	28
Praha	↔	Salzburg	10
Praha	↔	Leipzig	1
Ceska Trebova	↔	Dunajska Streda	28
Ceska Trebova	↔	Kosice	4
Ceska Trebova	↔	Zlin	14
Ceska Trebova	↔	Ostrava	12
Ceska Trebova	↔	Krems	4
Ceska Trebova	↔	Linz	6
Dunajska Streda	↔	Kosice	12
Dunajska Streda	↔	Budapest	13
Dunajska Streda	↔	Krems	2
Hamburg	↔	Nürnberg	16
Hamburg	↔	München	16
Hamburg	↔	Leipzig	14
Bremerhaven	↔	Nürnberg	8
Bremerhaven	↔	München	8
Nürnberg	↔	München	8
Hamburg	↔	Berlin	10
Hamburg	↔	Gernsheim	6

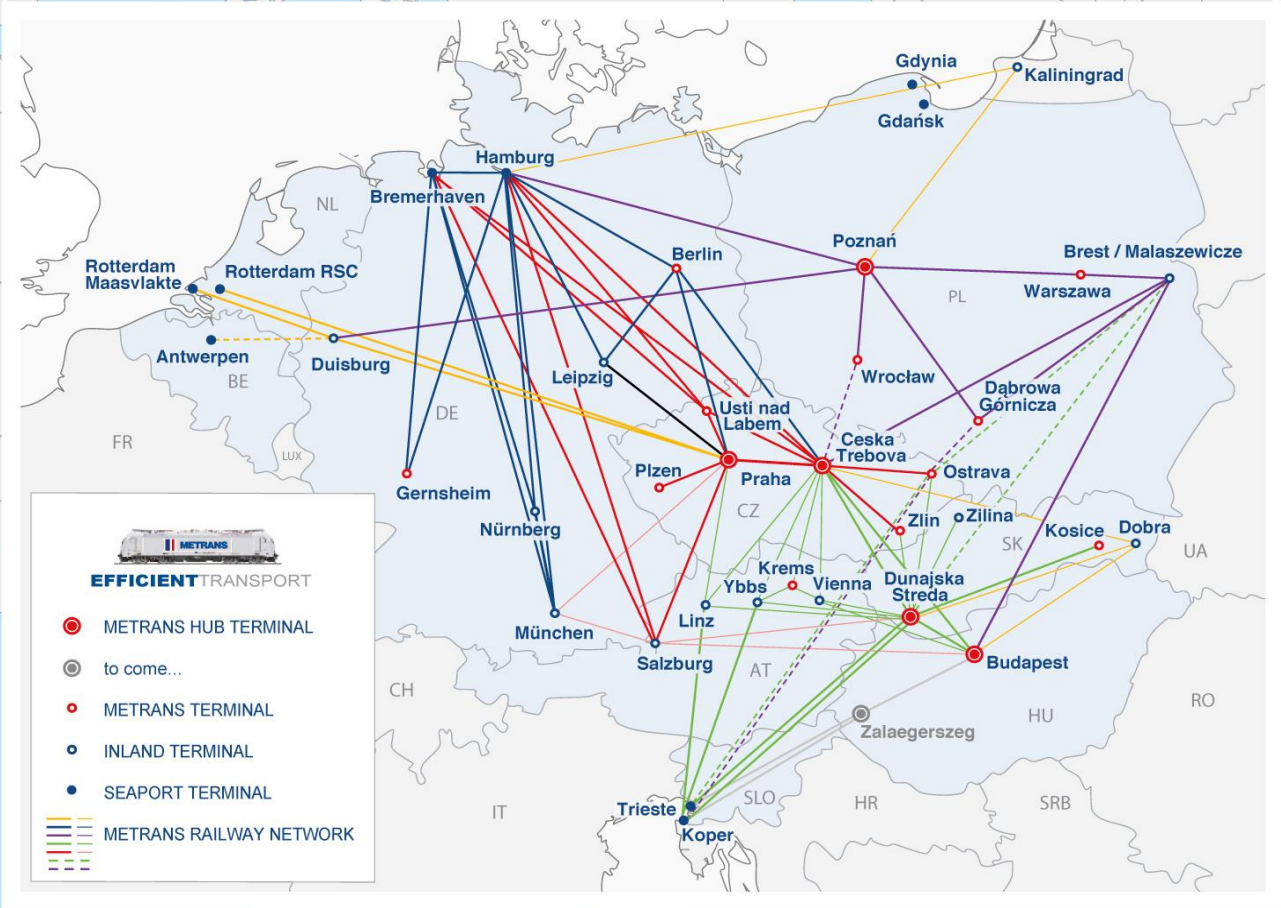


# Is there a real demand for rail movements between CHINA & EUROPE and v.v. ?

	2011	2012	2013	2014	2015	2016	2017	2018	2019	2020
TOTAL No. of trains on the Silk Road	17	42	80	308	815	1702	3673	6363	8225	12400

TOTAL No. of trains on the Silk Road





**EFFICIENT TRANSPORT**

- METRANS HUB TERMINAL
- to come...
- METRANS TERMINAL
- INLAND TERMINAL
- SEAPORT TERMINAL
- METRANS RAILWAY NETWORK
- METRANS RAILWAY NETWORK
- METRANS RAILWAY NETWORK

- 17 terminal & depots  
Czech Republic, Slovakia, Poland, Hungary, Austria & Germany
- Over 2 million sqm on Depot & Terminal capacities
- Almost 80 locomotives
- Almost 3 000 wagons
- 2 repair shops for locomotives & wagons
- Offices in the ports of Hamburg, Bremerhaven & Koper
- METRANS keeps NEUTRALITY also on the movements connected to SILK ROAD
- Wide range of benefits to our customers
  - Customs clearance directly at the terminal
  - Chinese speaking employee
  - Dedicated customer service desk for shipments connected to SILK ROAD
  - Local trucking



# Why to choose METRANS NETWORK & SOLUTION

We connect The Belt and Road initiative to the Europe via

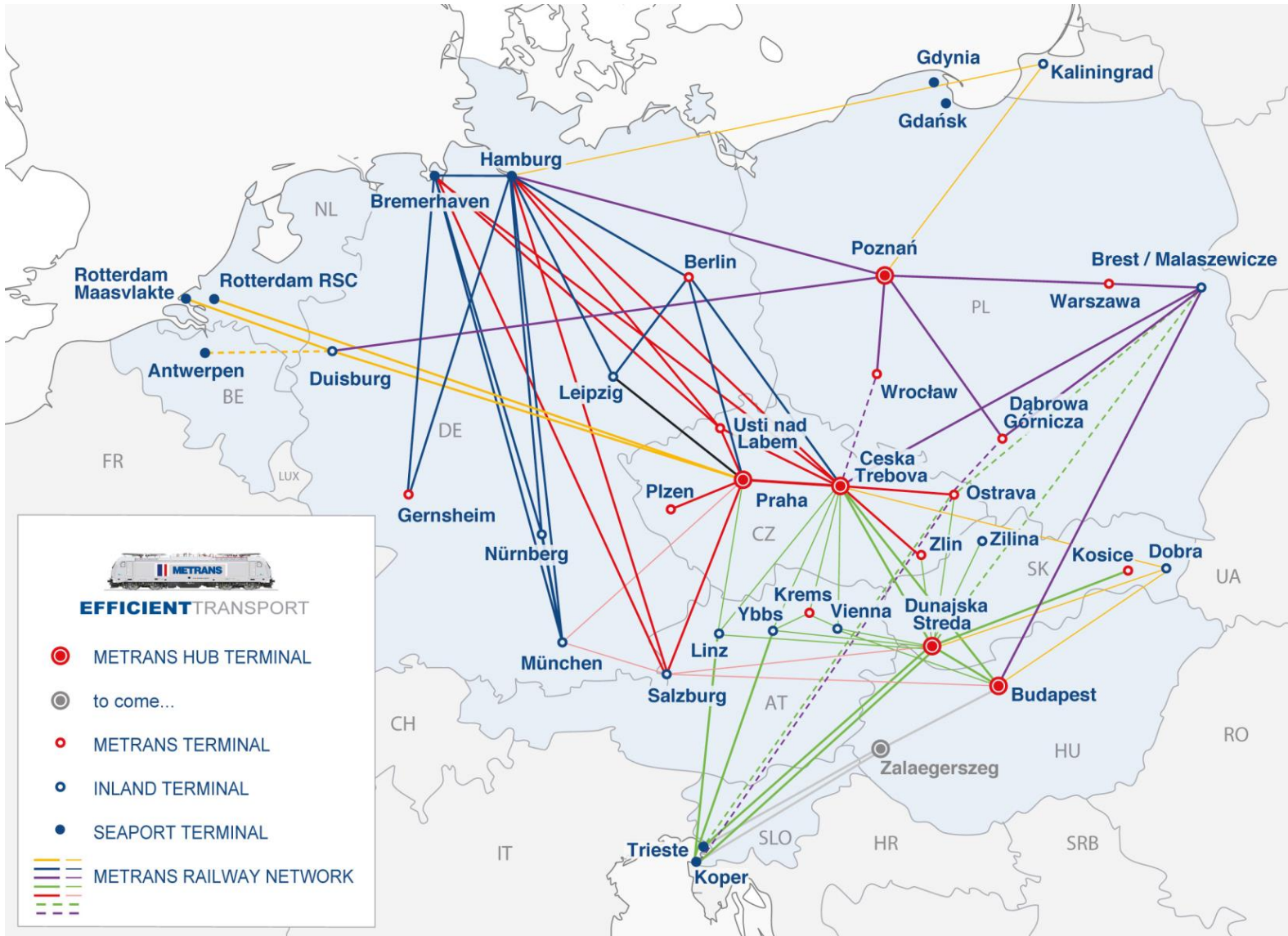
**Malaszewice / Brest (PL / BY) or Dobra / Chop (SK / UA)**

with our network of own, high sophisticated container terminals & depots and modern railway hubs in

**Prague (CZ) / Prague East (Ceska Trebova,CZ) / Dunajska Streda (SK) / Budapest (HU) / Poznan (PL)**



# Connection To SILK ROAD



- **Xian & Wuhan – Ceska Trebova (CZ)**
  - 3 x Trains ex Xian per week
  - 1x Train ex Wuhan per week
    - Routing via Malaszewicze
    - HUB Concept to METRANS Network
    - Connection to Dunajská Streda, Krems, Salzburg, Budapest, Hamburg, Duisburg
- **Zhengzhou – Hamburg (DE)**
  - 2 x Trains per week
    - Direct connection to Hamburg and via Hamburg to Munich
- **Zhengzhou – Dąbrowa Gornicza (Katowice PL)**
  - up to 2 x Trains per week
- **Xian – Dunajská Streda (SK)**
  - 1 x Train per week
    - Routing via Dobra
    - HUB Concept Dobra
    - Start of regular service Q1 2020
- **Xian – Milano (IT)**
  - 1 x Train per week
- **Jinhua – Budapest (HU)**
  - 1 x Train per week

# Why to choose our network for cargo from / to Far East?

Connect your cargo to METRANS network!

- METRANS operates regular weekly trains and supports partners from several Chinese origins as well as destinations and connecting them with our network
- Only last / first mile from / to “HUB” or “END” terminal is arranged by trucks
- By using of latest technologies and innovations on the field of transport and handling we are reducing CO<sub>2</sub> emissions as much as possible.
- Possibility to connect with terminals of other operators using METRANS network within the whole Europe – **neutrality guaranteed**
- **Dobra terminal** on the border with Ukraine as entry point to European Union and perfect connection to METRANS network
- **Malaszewicze / Brest terminals connected**



# Why to choose our network for cargo from / to Far East?

Connect your cargo to METRANS network!

- Strong and fast growing network of METRANS allows to find the most efficient way for your cargo
- Ability to combine export cargo from different European countries and choose the nearest HUB terminal (Ceska Trebova, Dunajska Streda or Budapest)
- New additional routing from Budapest to Xiamen
- New additional routing for import trains
  - Entry point to EU: Dobra / Chop – using transit via Ukraine



# Why to choose our network for cargo from / to Far East?

Connect your cargo to METRANS network!

- METRANS keeps **neutrality** also on the movements connected to SILK ROAD
- High quality service – METRANS keeps on all of his services highest standards
- Cargo connected to Europe largest rail & terminal network
- Wide range of benefits to our customers
  - Customs clearance directly at the terminal
  - Chinese speaking employee
  - Dedicated customer service desk for shipments connected to SILK ROAD



# With whom we are connected – our partners

Connect your trains to METRANS network!

METRANS is happy to offer you last mile – trucking from / to all our terminals.

RFQ CY China – CY Europe, or CY Europe – CY China should be sent to the following emails:

Xian, Wuhan, Xiamen: [sales@trans-Eurasia.com](mailto:sales@trans-Eurasia.com)

Zhengzhou: [liudj@zih718.com](mailto:liudj@zih718.com)

[kangyan@zih718.com](mailto:kangyan@zih718.com)

For last mile / first mile trucking or additional requests pls contact **our pricing department China:**

[Pricescn@metrans.eu](mailto:Pricescn@metrans.eu)





**Thank you for your attention!**